

# Securing your data while increasing operational efficiency

Safetica ONE is the only mature data security solution designed for scalability and needs of SMB and enterprises. Get your valuable data under control with great time to value. Go beyond data loss prevention with holistic behavior analysis to detect insider threats even earlier and respond even before they turn into incidents. Leverage insights into company workspace, digital assets, and operations to optimize costs.



People and data are the fuel for modern companies. When sensitive data is lost or stolen, a company's reputation, competitive advantage, and profitability all suffer.

The average cost of a data breach is **\$3.86 million**.\*

60% of small companies go **out of business within 6 months** of a major data breach.\*\*

\*2020 Cost of Data Breach Report, Ponemon Institute; \*\* National Cyber Security Alliance, October 2012

## Every organization can secure its data

Internal security has never been easier. We help you protect your data, guide your people and support business compliance. Safetica ONE prevents data breaches and makes data protection regulations easy to comply with by securing your business from human error or malicious behavior.

### Expert data security

We cover all areas of internal data risk and protect valuable data against human error and malicious intent.

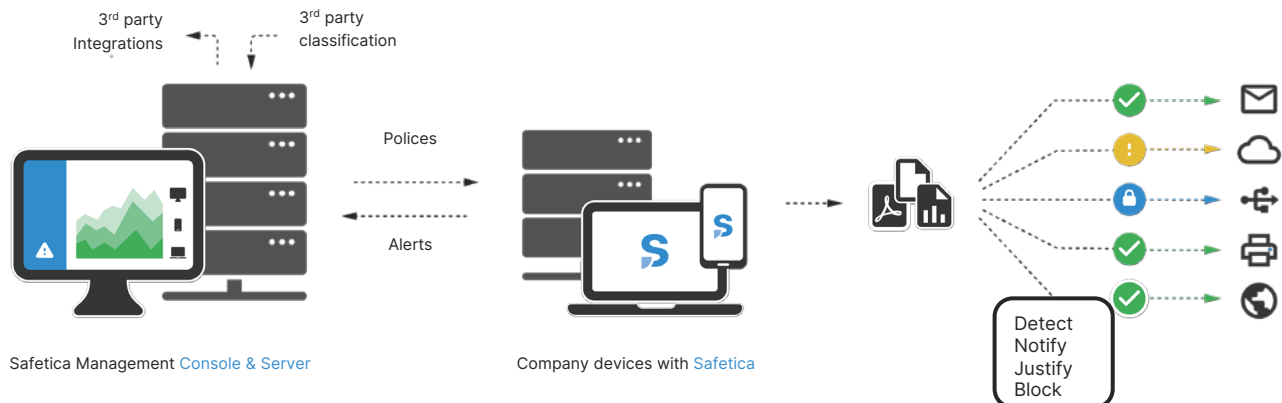
### Short time-to-value

Security should never come at the expense of productivity. Safetica ONE doesn't create extra hassle for employees or the IT department. Its time-to-value is unbeatable.

### Seamless integration

Only a seamlessly integrated security solution can work efficiently. Together with our technology partners, we protect data on all devices, all major operating systems, and in the cloud.

# Reference Architecture



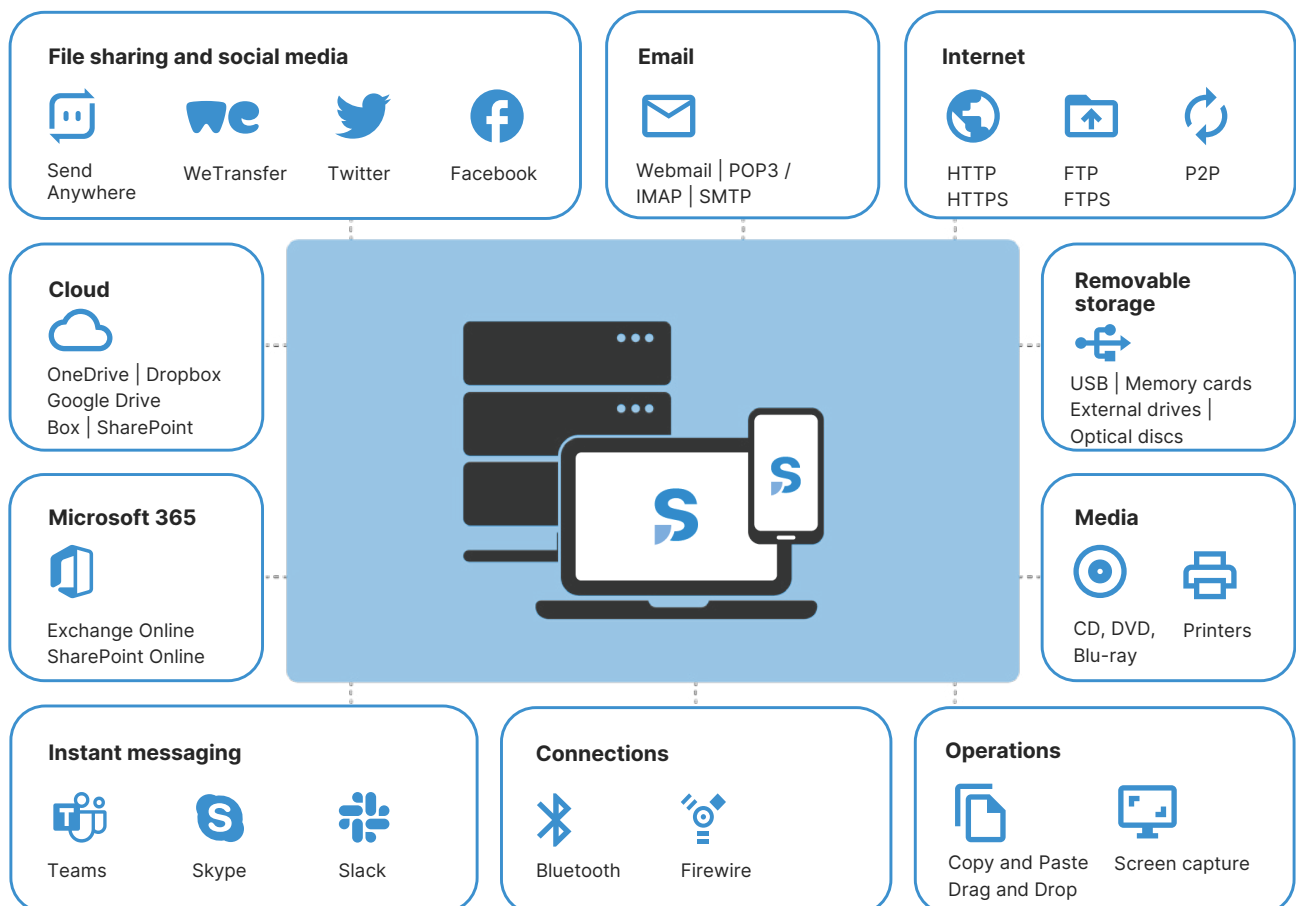
The physical or virtual server runs a database with endpoint activity and security records. The Safetica Management Console enables admins to manage security policies and display the collected information.

All actions are recorded and security policies are applied on desktops, laptops and other remote or even offline mobile devices (smartphones MDM only) with a Safetica Client.

Sensitive data is protected throughout all channels.

## Data channels covered

Safetica keeps data protected across a multitude of channels and platforms, ensuring your data is secure wherever it resides or flows.



# Discovery Key Benefits

Safetica ONE Discovery audits and classifies all data flows in your organization. It identifies sensitive information and security risks using content inspection with optical character recognition (OCR). Get a quick overview of what is happening in your workspace in real time. Better understand all internal activities, processes and data risks to enhance your data security and internal efficiency.



Get insight into data security incidents and [regulatory compliance](#) violations to be able to respond and mitigate their impacts



[Audit and classify](#) your sensitive data flows in any channel or activity to find out where your data is at risk of loss or theft



Get [instant notifications](#) and actionable [management reports](#) with easy-to-read risk level evaluation and incident overview



[Discover and remove](#) unwanted or unnecessary software, cloud services, or hardware/peripherals



[Easy-to-deploy](#) solution with one-click integration with [Microsoft 365](#) respects established processes and provides first reports within days

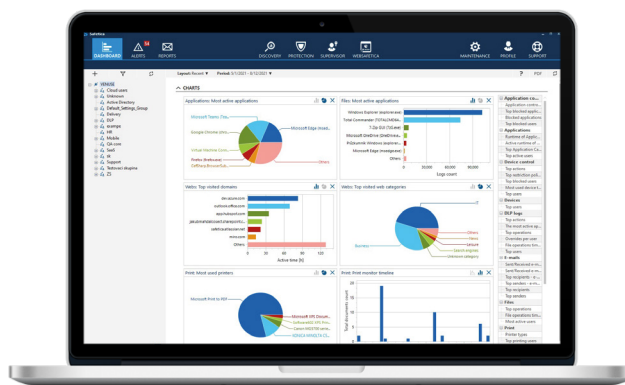


Objectively [analyze user activities](#) in your environment and determine if company [equipment and network are used properly](#)

## Key highlights

Identify how company data is used and where it is stored and sent, no matter where it resides or flows.

- ✓ Windows and macOS support
- ✓ One-click integration with Microsoft 365
- ✓ File content inspection and classification
- ✓ Easy to upgrade to the full-featured data security platform
- ✓ Runs on bare metal or virtualized on-prem, hosted, VM hosted in cloud



Safetica Management Console for Safetica ONE Discovery provides deep insights into all recorded file operations with different views for easy interpretation.

# Protection Key Benefits

Safetica ONE Protection identifies risks, educates your employees, and prevents people's mistakes and malicious acts to protect your data. Combination of data analytics, data classification, and data loss prevention (DLP) with insider threat protection creates a secure environment while maintaining efficient business operations.



Have **full control over sensitive data** flows and **internal risks** based on behavior analysis & content inspection



Get regular **security reports** and real-time incident **notifications**



Use **Safetica Zones** for simplified high-level data security



Create **Shadow Copy** of leaking data to keep forensic evidence for further investigation

## Set clear policies for all users and data channels

Set up security policies for specific groups or individuals. Select the desired workflow with configurable actions from silent auditing, through user notifications to strict blocking.

## Detect potential threats and analyze internal risks

Respond to threats even before a major incident happens thanks to early discovery of behavior anomalies and data flow risks in your organization. Safetica ONE uses advanced content classification and OCR for sensitive data detection in image files and scanned PDF documents.

## Empower employees to work with sensitive data

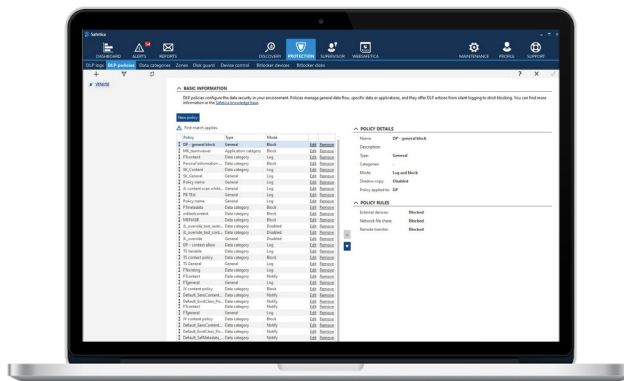
Display educational notifications to employees when there's a risk of policy violation to let them know or decide. Enforce specific processes to protect the most valuable data.

## Get all devices under control, online and offline

Restrict the use of portable peripherals or unauthorized media. Control corporate mobile devices and keep track of data that leaves Microsoft 365. Safetica remains fully active regardless of network connection. All collected records are synchronized when connection is restored.

## Key highlights

Based on content inspection, internal risk analysis, and clear policies set up for all data channels, Safetica ONE Protection can recognize when somebody makes a mistake or takes chances with your sensitive data. Depending on which mode Safetica ONE is operating in, it can either block the risky activity, notify the admin, or remind the employee about the organization's security guidelines.



Safetica Management Console enables detailed but easy configuration of DLP policies, data categories, or reports.



# Detailed Features List I

Compatible with Windows, macOS, Microsoft 365, Android, iOS	Safetika ONE Discovery	Safetika ONE Protection	Safetika ONE Enterprise
<b>Security Audit</b>	✓	✓	✓
<b>Data-flow security audit</b> Security audit of data-flow in all channels, including external devices, web upload, email, instant messaging, print, and cloud drives.	✓	✓	✓
<b>Office 365 file and email audit</b> Audit of file operations and outgoing email communication in Office 365.	✓	✓	✓
<b>Regulatory compliance audit</b> Discover violations of most common regulations, such as PCI-DSS, GDPR, or HIPAA in all regional variations.	✓	✓	✓
<b>Workspace security audit</b> Audit usage of company devices, applications, networks, and print. Discover unused or misused resources to maintain workspace, ensure retention, and reduce costs.	✓	✓	✓
<b>Content inspection</b> Classify sensitive files and emails by powerful content inspection with predefined templates or custom rules and dictionaries.	✓	✓	✓
<b>Detection of suspicious activities</b> React fast thanks to real-time detection of suspicious activities and immediate email alerts.	✓	✓	✓
<b>Endpoint Data Protection</b>	✗	✓	✓
<b>Email and network protection</b> Data protection for email, web upload, instant messaging, and network shares.	✗	✓	✓
<b>Devices and print protection</b> Manage data-flow to external devices and protect sensitive data against forbidden printing on local, network, or virtual printers.	✗	✓	✓
<b>Remote work protection</b> Avoid data leaks on remote endpoints or remote desktop connections. Support a wide range of remote access solutions.	✗	✓	✓
<b>Advanced data classification</b> Use advanced technologies to detect and label sensitive data based on origin, workflow context, or file type. Take advantage of metadata detection to use 3rd party classifications. Allow users to classify files themselves.	✗	✓	✓
<b>Different remediation policies</b> React flexibly to detected incidents to empower and educate your employees. Incidents can be logged, blocked, or justified/blocked with override.	✗	✓	✓
<b>Incident Shadow Copy</b> Keep forensic evidence for incidents by creating shadow copies of leaking data. Shadow copies are fully encrypted and can be kept on local computers with a retention policy.	✗	✓	✓

# Detailed Features List II

Compatible with Windows, macOS, Microsoft 365, Android, iOS	Safetika ONE Discovery	Safetika ONE Protection	Safetika ONE Enterprise
<b>Endpoint Data Protection</b>	×	✓	✓
<b>Workspace control</b> Define your secured workspace and reduce perimeter by application and website control. Avoid undesirable behavior in your company and reduce the cost of security management.	×	✓	✓
<b>Safetika Zones</b> Easy management of safe data perimeter with unique Safetika Zones, which significantly reduce the number of data protection policies.	×	✓	✓
<b>BitLocker encryption management</b> Centralized management of local drives and external devices with BitLocker encryption.	×	✓	✓
<b>Cloud Data Protection</b>	×	✓	✓
<b>Endpoint cloud sync protection</b> Data protection for cloud drives on endpoints, e.g., OneDrive, Google Drive, Dropbox, Box, etc.	×	✓	✓
<b>Endpoint Microsoft 365 protection</b> Data protection for Microsoft 365 and SharePoint from endpoints. Prevent sharing or uploading data you want to keep away from the cloud.	×	✓	✓
<b>Azure Information Protection</b> Detection of data classifications from Microsoft Azure Information Protection, even in encrypted form.	×	✓	✓
<b>Exchange Online Protection</b> Unify email policies across endpoints and cloud email. Manage and filter outgoing data from endpoints and Exchange Online.	×	✓	✓
<b>Enterprise Features</b>	×	×	✓
<b>Notifications branding</b> End-user notification custom branding (logo).	×	×	✓
<b>Workflow control</b> Application policies and expert policy settings for aligning endpoint workflow with company processes.	×	×	✓
<b>Multi-domain support</b> Multiple domain enterprise support for Active Directory.	×	×	✓
<b>Security Automation</b>	×	×	✓
<b>SIEM integration</b> Automated reporting of incidents to SIEM solutions (Splunk, QRadar, LogRhythm, ArcSight, etc.).	×	×	✓
<b>FortiGate integration</b> Automated security integration with FortiGate network appliances to create a robust endpoint-to-network security solution.	×	×	✓
<b>Reporting API</b> API for reporting Safetika data to analytics and visualization services.	×	×	✓

# Tech Specs and Requirements

## Server

- 2.4 GHz quad-core processor
- 8 GB RAM and more
- 100 GB of available disk space
- A shared or dedicated server, support of virtual machines and cloud hosting
- Requires connection to server with MS SQL 2012 and higher or Azure SQL
- MS Windows Server 2012 and higher

## Database

- MS SQL Server 2012 and higher, or MS SQL Express 2016 and higher, or Azure SQL.
- MS SQL Express is part of a universal installer and recommended for up to 200 protected endpoints.
- 200 GB of available disk space (optimally 500 GB or more, depending on the range of collected data).
- A shared or dedicated server, support of virtual machines and cloud hosting. It can be hosted with Safetica server together.

## Windows Client

- 2.4 GHz dual-core processor, 2 GB RAM and more
- 10 GB of available disk space
- MS Windows 7, 8.1, 10 (32-bit [x86] or 64-bit [x64])
- MSI installation package
- .NET 4.7.2 and higher

## macOS Client

- 2.4 GHz quad-core processor, 2 GB RAM and more
- 10 GB of available disk space
- macOS 10.10 and higher (for full DLP feature set recommend 10.15 and higher).

## Mobile Client

- Android: min. Android 6+ and Google Play Services
- iOS: min. iOS 10+

## Supported Cloud Providers

- Microsoft Azure, Microsoft 365

## Selected Certifications

- ISO 9001 & ISO/IEC 27001
- Member of Cybersecurity Tech Accord
- Microsoft Gold Partner
- Member of ESET Technology Alliance
- Member of the Fortinet Technology Alliance

